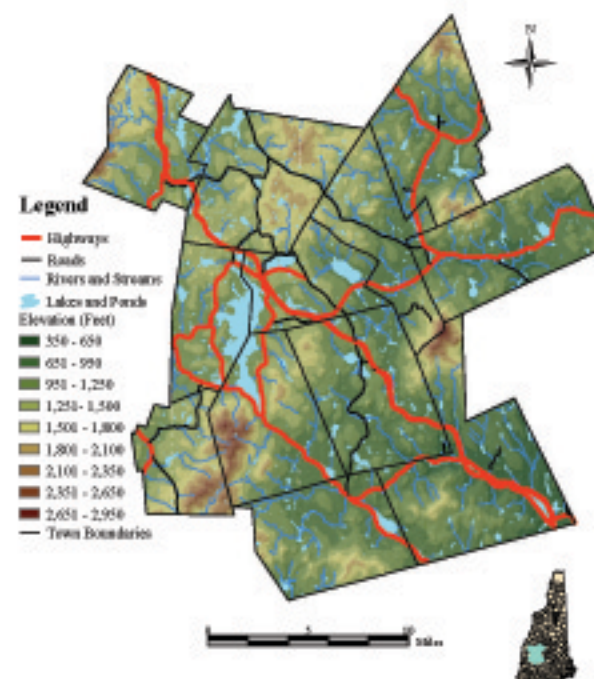


# OVERVIEW



The third year project for students in the Community and Environmental Studies major is a comprehensive year long, eighteen credit, community-based research project. This year, the project is an extensive regional investigation conducted amongst the twelve towns served by the Ausbon Sargent Land Preservation Trust (ASLPT). Individually, and in groups we have conducted an in-depth study of areas in the ASLPT region defined by town boundaries. The twelve towns in the ASLPT region include Andover, Bradford, Danbury, Goshen, Grantham, New London, Newbury, Springfield, Sunapee, Sutton, Warner, and Wilmot. The work produced in this investigation has been directed toward identifying conservation priorities for the ASLPT.

## ASLPT Region



Map data is the 2010 USGS National Elevation Dataset (NED) and is provided as a service to the public. The data is not guaranteed to be accurate and is provided as a service to the public. The data is not guaranteed to be accurate and is provided as a service to the public. The data is not guaranteed to be accurate and is provided as a service to the public.

Colby-Sawyer College  
 200 Main Street  
 New London, NH 03257  
 (603) 888-3444



MEMBERS OF THE CLASS		
	Name	Hometown
Back row, left to right	Pete Craven	Holyoke, MA
	Chris McKee	Deering, NH
	Kerrie Garvey	Dracut, MA
Front row, left to right	Kris Kebler	North Conway, NH
	Mike Carbone	Newbury, MA
	Biz Stamm	Hudson, NH
	Adam Finkelman	Cranston, RI